



**Leading supplier
of attachments
for the heavy industry**



RIPPER PRODUCT BROCHURE

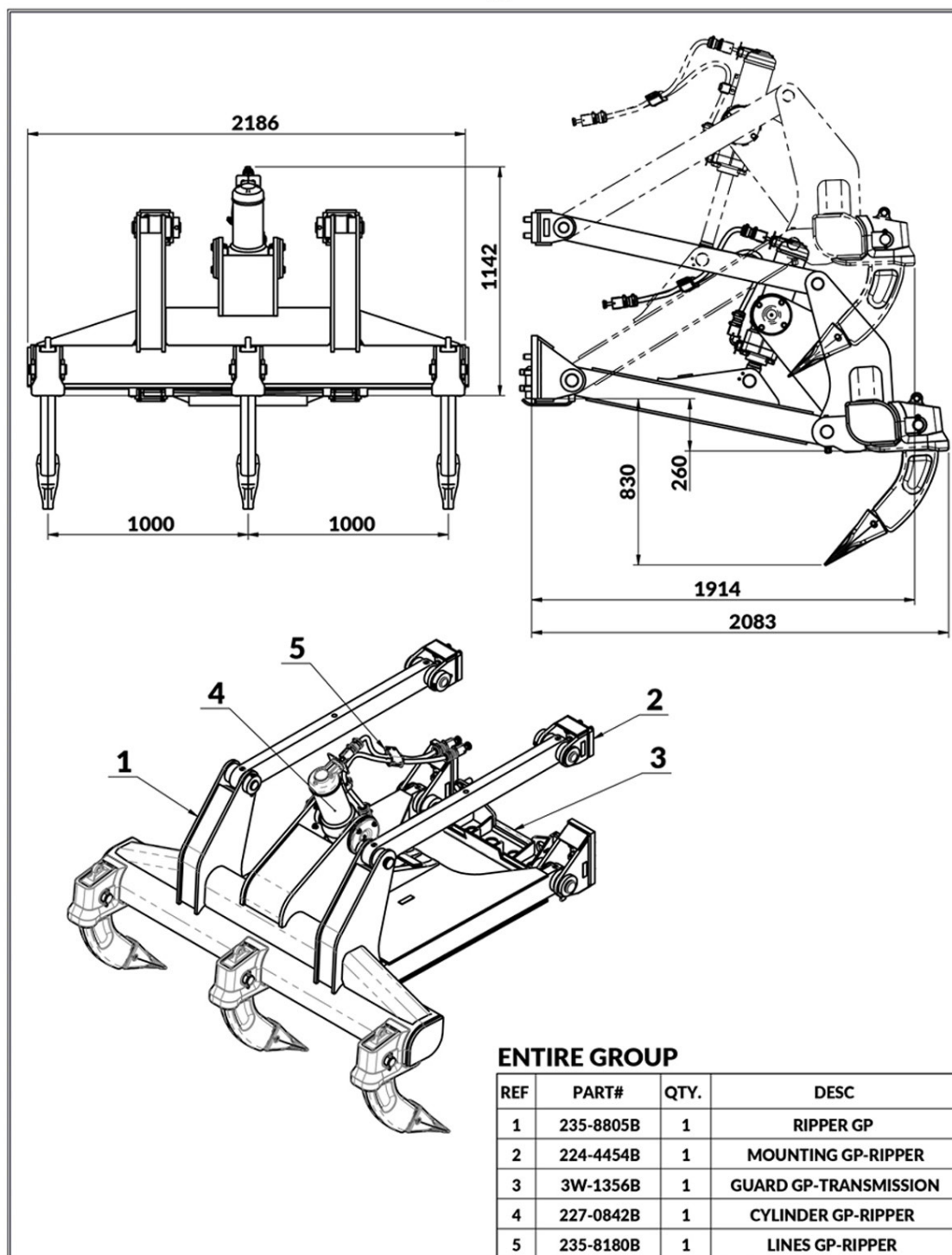
For Caterpillar D6 H/R/T

Visit us at [smitma.com](https://www.smitma.com)

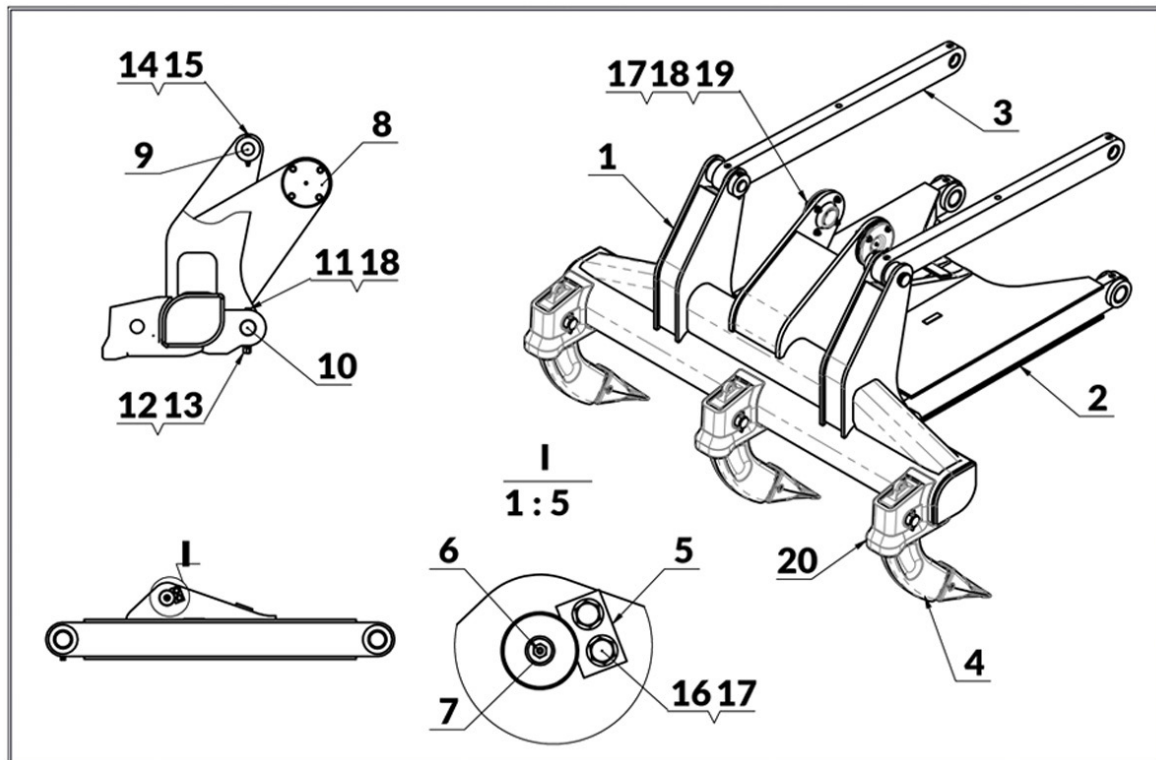


Featured components and specs of the ripper

224-4499B Rippers

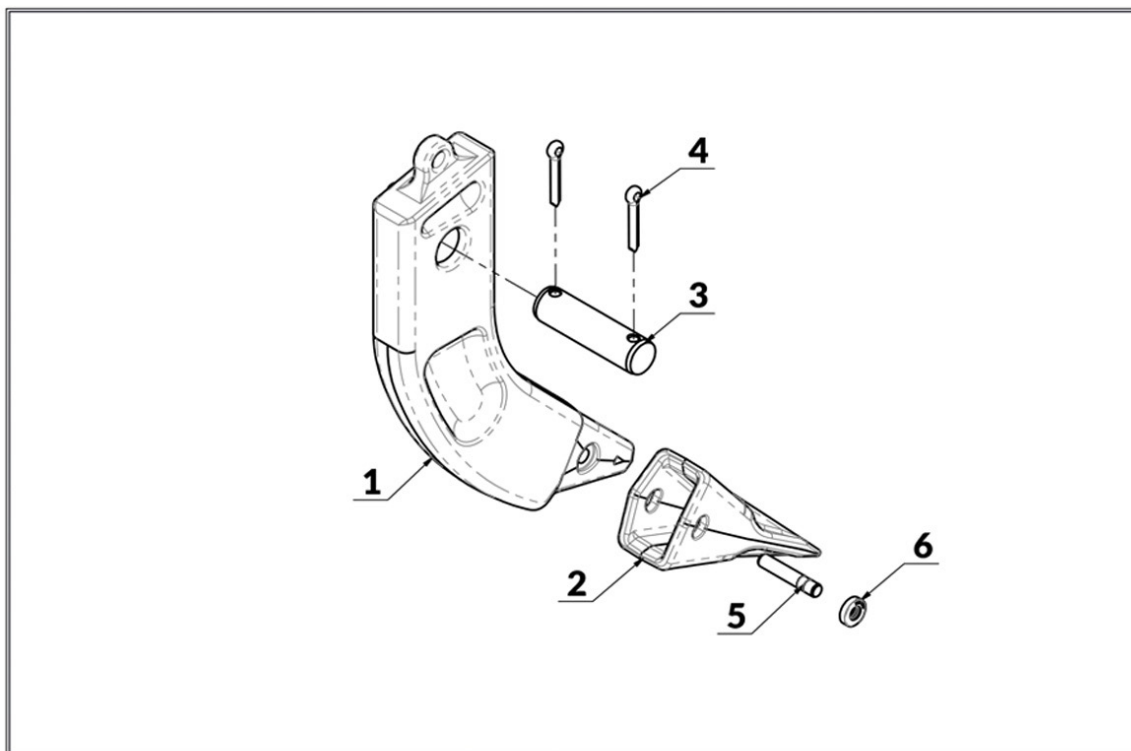


Please note that you can order all rippers and ripper components directly from stock at Smitma.

235-8805B RIPPER GP

ENTIRE GROUP

REF	PART#	QTY.	DESC
1	290-0862B	1	CARRIAGE AS.
2	189-0985B	1	FRAME AS.-BRG &
3	9W-0873B	2	LINK AS.
4	9J-8926B	3	TOOTH GROUP-RIPPPER (B)
5	2K-0703B	1	BAR
6	3B-8489B	3	FITTING-HYD
7	3K-8510B	1	PIN
8	4K-3004B	2	BEARING-TRUNNION
9	9J-9598B	2	PIN
10	1U-0159B	2	PIN
11	8T-7929B	2	BOLT

REF	PART#	QTY.	DESC
12	9N-4449B	4	SPACER
13	9N-4450B	2	SPACER
14	6V-7744B	2	LOCKNUT
15	7X-2543B	2	BOLT
16	5C-6565B	2	BOLT
17	8T-4223B	18	WASHER-HARD
18	8T-4244B	10	LOCKNUT
19	8T-4648B	8	BOLT
20	5K-7748B	3	HOLDER-TOOTH

9J-8926B TOOTH GROUP-RIPPER (B)

ENTIRE GROUP

REF	PART#	QTY.	DESC
1	9J-8923B	1	TOOTH GP-RIP
2	6Y-0352B	1	TIP RIPPER
3	8J-2190B	1	PIN
4	3B-5325B	3	COTTER
5	114-0358B	1	PIN
6	114-0359B	1	RETAINER AS.-GET

Questions?

Do you want to be sure that the dimensions correspond 100%? Please contact us at sales@smitma.com.

Q&A

Some frequently asked questions answered...

1 Do you have a suitable ripper for my machine?

In terms of Caterpillar machinery, we are able to offer a ripper for most if not all models. If you are in doubt or work with a brand other than Caterpillar, please reach out to sales@smitma.com. We are happy to help you.

2 Does my machine have the necessary connection for this ripper?

To be able to connect a ripper, your machine should have hydraulic lines, a ripper valve and a compatible ripper. If you're missing any of these parts, simply reach out to sales@smitma.com.

3 Do you have rippers available at Smitma?

At Smitma we have a wide range of new rippers available. If you're interested in buying a ripper, please feel free to navigate to our live stock on our website: www.smitma.com/parts/type/ripper/.

4 Is it possible to replace ripper components?

All ripper components are replaceable. We are more than happy to provide a wide range of spare parts for your convenience directly from stock for the best market prices.

5 Which components should be checked/replaced on a regular basis?

The most common parts of a ripper that might need a replacement are the ripper tips. When these become shorter and stubby, we recommend replacing them. Of course you can find ripper tips on our website!

6 Are you able to deliver a ripper at my doorstep?

As a result of strategic partnerships with transporters all across the globe we are able to deliver just about anything at your doorstep. Get in touch with our team to learn more about our transport solutions!

7 Do you have a more extensive document with technical drawings available?

For a complete overview of all technical drawings related to the Caterpillar D6 ripper we would like to refer to the following document: [D6R Manual Smitma](#)

Here we go!

So you plan to mount a ripper to your machine?

We give you handy tips & tricks on how to do this best and what to pay attention to in this process.

- 1 Take off the drawbar if there is one on the machine.
- 2 Clean the mounting holes and clean up with the tread tap so the the bolts can be screwed on tightly.



- 3 If there is a tread end, tread it as well so the nuts can be screwed on tightly.
- 4 Place the brackets parallel to the mounting plates.
- 5 Position the ripper so that the bolts and nuts can be tightened with the air wrench.





6 When the bracket is mounted on the machine, take off the hinge pins and take off the ripper.

7 Tighten the bolts and nuts of the lower hinge with the air wrench.

8 Mount the upper bracket and the tightened bolts a bit so the bracket move a little bit at the leeway of the bolt holes.

9 Put the ripper in position again and grease the lower pins to mount it easily. The necessary shims must be placed on the inside immediately. Make sure that the pin holes are in position, allowing the secure bolts to be mounted. Mount the secure bolts.

10 Mount the upper hinge pins and tighten a number of bolts so the bracket is 100% fixed.

11 Take off the pins again, and tighten the bolts of the upper hinge securely with the air wrench.

12 Grease the upper hinge pins and put the washers in position to mount the secure bolts- and nuts. Please ensure that the hole on the pin is in the correct position to allow the bolts to be mounted properly.



Continue on next page...

- 13 Put the o-ring on the hoses for mounting.



- 14 Test the ripper by moving it up and down, it should work according the symbol in the cabin.

- 15 Grease all hinges.

That's it



Prefer to watch it on video?



<https://youtu.be/liKHSJCDuPM>



About us

Smitma B.V. is one of the leading suppliers of high quality used earthmoving machinery and road equipment worldwide. From our office and yard in Venlo, the Netherlands, we provide our clients with the best solution for their needs in used equipment.

Smitma was founded in 1968 as a contractor and machinery repair shop. In those days we already sold our own used equipment and started to trade, mostly in used bulldozers. Because of the increasing demand in used machinery we have stopped our contracting work in the mid 70's to focus on the machinery business. From the beginning we have always been developing our ways of doing business and we have been listening to our clients to deliver the machines they needed.

Our team

With 21 members of staff to clean, service, repair, buy/sell and arrange logistics & customs we deal about 600 machines per year to all parts of the world. We have about 150 machines in stock like excavators, articulated and rigid dump trucks, dozers, motor graders, wheel loaders, compactors, asphalt pavers, Cold milling machines.



We're very proud of our very strong reputation as a reliable trading partner of used heavy machinery. A reputation which put us on the map worldwide. To keep this reputation, we have a strict quality procedure. For every machine offered by us.

Why Smitma?

Smitma B.V. is a one-stop-shop for all your heavy equipment needs. With a wide range of both used and unused attachments, Smitma can offer almost all parts based on your specific needs. In addition, with over 60 years experience in the market our team of experts offers great advise, honest prices and the best transport solutions for your convenience.

1

Trusted
partner since
1960

2

Always over
350
attachments
in stock

3

**Best
price**
guaranteed

4

In 5 steps to
100% quality
due to our strict quality
procedure

5

Fast and secure
Delivery
worldwide



Smitma B.V.
Columbusweg 13
5928 LA Venlo
The Netherlands

Visit us at **smitma.com**